



LED lighting made up of aluminum spot covered by anti-heat ABS case with unipolar switch, 3 power LED sources at 350mA operating current, 8°-25°-40° lens, stainless steel gooseneck arm sheathed by PVC, ABS base with holes for lamp fastening and on/off switch for interruption primary driver LED. Built-in LED driver.

Power supply: 230V 50/60Hz.



Applications: particularly suitable for the lighting of sewing machines, stitching machines, work benches.

ELECTRICAL FEATURES

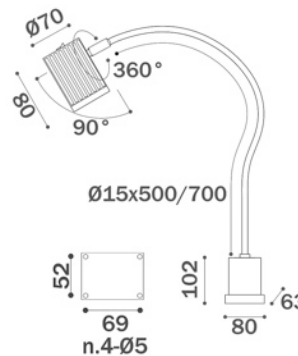
Power supply	230Vac 50/60Hz
Led operating voltage	11,4 Vdc
Current	350 mA cost cc
Power	3 W
IEC class	II
Power cable	PVC L1,5m with Schuko
Driver LED	cod. A0171005060503B on the base
Degree of protection	IP30

MECHANICAL AND OPTICAL FEATURES

LED type	Power led
N. LED	3
LED lifetime	50.000 h
Light color	5000 K - CRI75
Fastening	4 screws
Switch	on the base and on the spot
Weight	1,30 Kg ~

ORDER CODES

Codes	Lens	L-Arm	Color
LSF.3L.08.70.N	8°	700mm	Black
LSF.3L.25.70.N	25°	700mm	Black
LSF.3L.40.70.N	40°	700mm	Black
LSF.3L.08.70.B	8°	700mm	White
LSF.3L.25.70.B	25°	700mm	White
LSF.3L.40.70.B	40°	700mm	White
LSF.3L.08.50.N	8°	500mm	Black
LSF.3L.25.50.N	25°	500mm	Black
LSF.3L.40.50.N	40°	500mm	Black
LSF.3L.08.50.B	8°	500mm	White
LSF.3L.25.50.B	25°	500mm	White
LSF.3L.40.50.B	40°	500mm	White

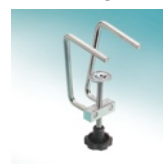


Dimensions (mm)

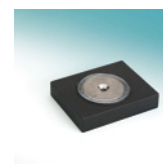
Light flow from the surface

H 220mm - 40° lens		H 500mm - 40° lens	
Corrente	350mA	Corrente	350mA
∅ (mm)	lux	∅ (mm)	lux
60	13000	105	3600
120	6000	240	550
180	1000	380	120

Fastening accessories



Clamp03



Magnetic base B01