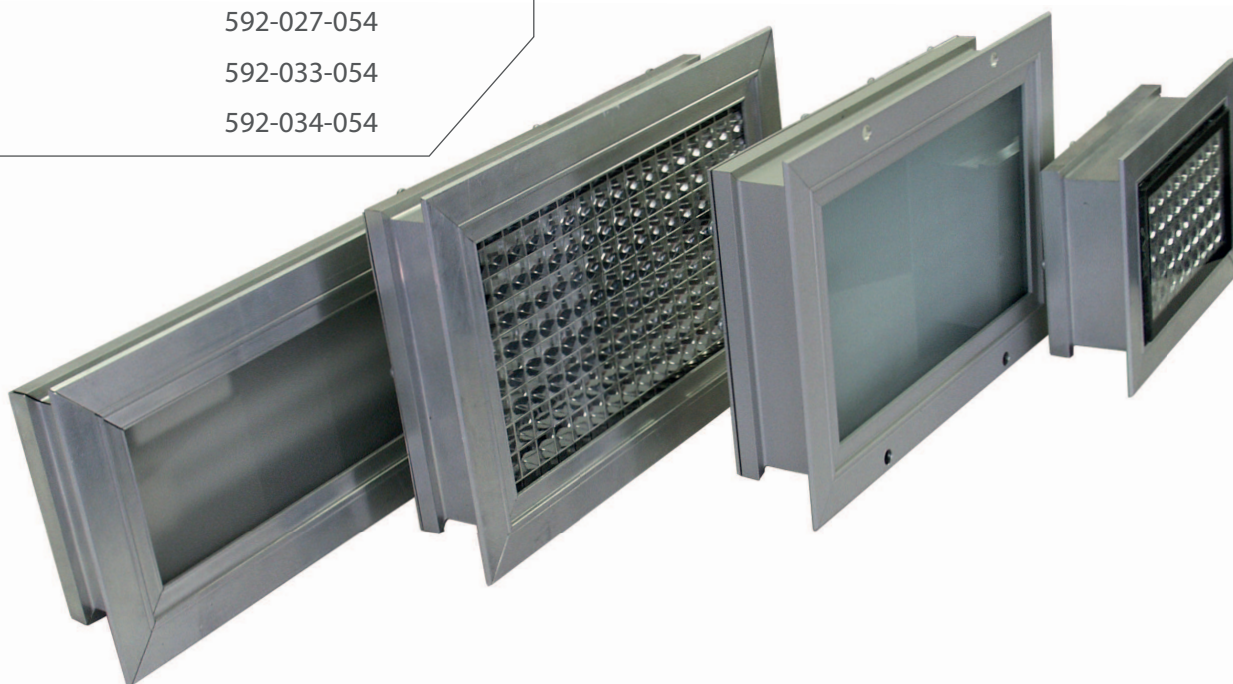


Candolux

System of protection	IP67 (water proof at the front)
Series	Recessed lamp
Cover plate	ESG
Power	36 W / 2 x 36 W
Voltage	230 V / 24 V
Luminous	2800 / 5800 Lumen
Item nos.	592-015-001 592-027-054 592-033-054 592-034-054

CHARACTERISTICS

- machine lamp
- workplace lamp
- water proof lamp (front)
- built in machine lamp



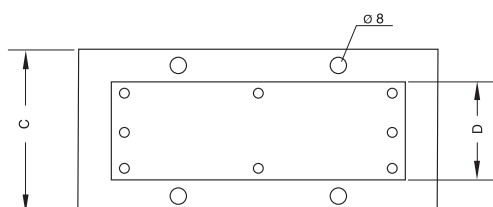
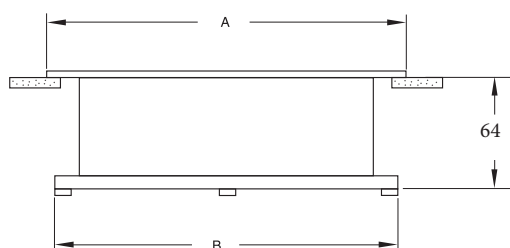
Candolux



TYPE	COVER PLATE	ITEM NO.	POWER	LUMINOUS / LUMEN	BALLAST / VOLTAGE
Candolux CE / 236 TC-F	ESG	592-015-001	36 W	2800	230 V / 50-60 Hz EVG built-in
Candolux 100	ESG	592-027-054	36 W	2800	230 V / 50-60 Hz EVG built-in
Candolux 100	ESG	592-033-054	36 W	2800	EVG 24 V / DC built-in
Candolux 200	ESG	592-034-054	2 x 36 W	5800	230 V / 50-60 Hz EVG built-in

Our Candolux-lamps are available in different versions. More information available on request!

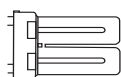
DRAWING



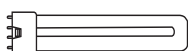
DIMENSIONS / MM

		A	B	C	D
TC-F	36 W	289	263	188	162
TC-L / 100	36 W	491	457	138	100
TC-L / 200	2 x 36 W	514	484	210	140

SPARE PARTS



replacement lamp 36 W
TC-F
item no.: 213-920-033



replacement lamp 36 W
TC-L
item no.: 213-920-010