



LED lighting kit made up of stabilized power PSU, spotlight LED with chromium plated flex arm, fastening clips. particularly suitable for the precision lightning of sewing machines and laser machines.

Adjustable beam.



**Order codes**

K11LED3W	Complete LED KIT
L11LED3W	LED module with connecting jack
A11LED3W	PSU for L11LED3W

**LED electrical features**

Voltage	3,8 Vdc
Current	500 mA dc
Power	3W
IEC class	III
Degree of protection	IP40
Switch	embodied in PSU

**Optical Feature**

LED type	Power led
N. of LED	1
LED lifetime	50.000 h
Brightness	Adjustable
Light color	5000 K

**Dimensions**

Spot LED	Ø14x51mm
Arm	Ø6x500mm

**Fastening**

Fastening	Clips
-----------	-------

**LED driver features**

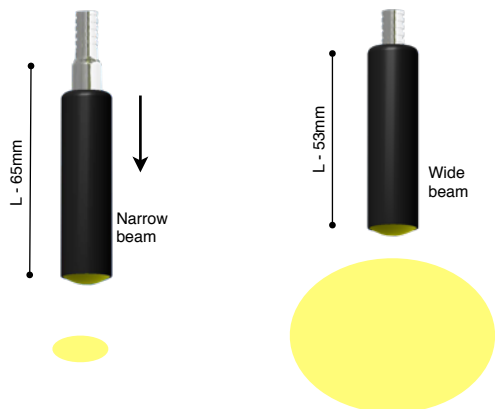
Code	A11LED3W
Vin (power supply)	230V 50/60Hz
Vout	3,8Vdc
I out	450mA
W	3W
Dimensions	90x55x50mm
Kit weight	0,50 Kg ~

**Power cable**

LED-Module	PVC - L1,5m/jack
Driver	PVC - L1,5m/europlug (230V) + L0,2m/jack (LED)

**Adjustable lens**

The LED beam can be adjusted narrow/diffused just moving reflector back and forth.



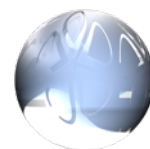
**Flow light from working surface**

H 220mm	
Ø (mm)	lux
100	480 lux
150	260 lux

H 500mm	
Ø (mm)	lux
220	230 lux
330	140 lux

light changes





LED lighting kit made up of stabilized power PSU, spotlight LED with chromium plated flex arm, fastening clips. particularly suitable for the precision lightning of sewing machines and laser machines.

**Adjustable beam.**



**Order codes**

K7LED1W	Complete LED KIT
L7LED1W	LED module with connecting jack
A7LED1W	PSU for L7LED1W

**LED electrical features**

Voltage	3,8 Vdc
Current	250~350 mA dc
Power	1W
IEC class	III
Degree of protection	IP40
Switch	embodied in PSU

**Optical Feature**

LED type	Power led
N. of LED	1
LED lifetime	50.000 h
Brightness	Adjustable
Light color	5000 K

**Dimensions**

Spot LED	Ø14x51mm
Arm	Ø6x500mm

**Fastening**

Fastening	Clips
-----------	-------

**LED driver features**

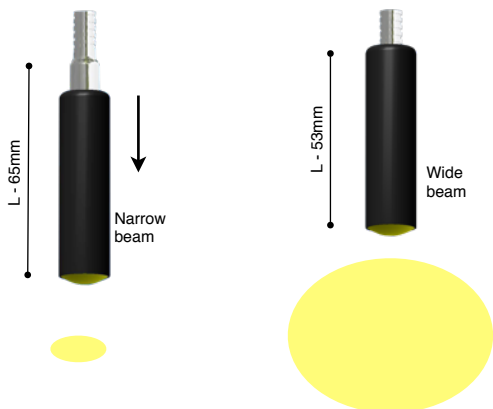
Code	A7LED1W
Vin (power supply)	230V 50/60Hz
Vout	3,8Vdc
I out	250mA
W	3,5W
Dimensions	90x55x50mm
Kit weight	0,50 Kg ~

**Power cable**

LED-Module	PVC - L1,5m/jack
Driver	PVC - L1,5m/europlug (230V) + L0,2m/jack (LED)

**Adjustable lens**

The LED beam can be adjusted narrow/diffused just moving reflector back and forth.



**Flow light from working surface**

H 220mm	
Ø (mm)	lux
120	350 lux
150	340 lux

H 500mm	
Ø (mm)	lux
260	200 lux
330	170 lux

