

AuLED 40

System of protection	IP67
Series	surface-lamp
Dimension	15 x 90 x 270 mm
Cover plate	ESG glass = toughened safety glass
Power	2 x 8,5 W
Voltage	24 V/DC
Luminous	1500 Lumen
Item nos.	592-504-001 (plug side) 592-504-002 (plug behind)

CHARACTERISTICS / ADVANTAGE

- Al-box, robust
- Toughened safety glass
- Plug connection M8
- LED-lamp
- Compact form - space-saving installation



AuLED 40



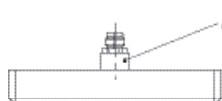
TYPE	COVER PLATE	ITEM NO.	POWER	LUMINOUS	DIMENSION / MM	VOLTAGE	PLUG
AuLED 40	ESG	592-504-001	2 x 8,5 W	1500	15 x 90 x 270	24 V/DC	side
AuLED 40	ESG	592-504-002	2 x 8,5 W	1500	15 x 90 x 270	24 V/DC	behind

ACCESSORIES



Power supply stabilized
 Power: 30 W
 Item no. : 213-820-208
 Voltage: 100-240 V / 50-60 Hz /
 24 V/DC

DRAWING



M8 Steckverbinder

