

Lumolux K2 E

System of protection	IP67
Series	Ø 70 mm
Length	215 mm / 240 mm
Protection tube	G = Borosilicate glass
Power	18 W
Voltage	24 V oder 230 V
Ballast	EVG, built-in
Luminous	1200 Lumen

CHARACTERISTICS / ADVANTAGE

- traditional machine lamp - proven concept!
- different versions - for almost every need
- IP 67
- easy installation
- easy lamp replacement
- inexpensive spare parts available
- electronic ballast (EVG)



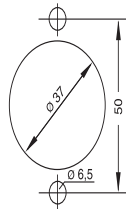
Lumolux K2 E



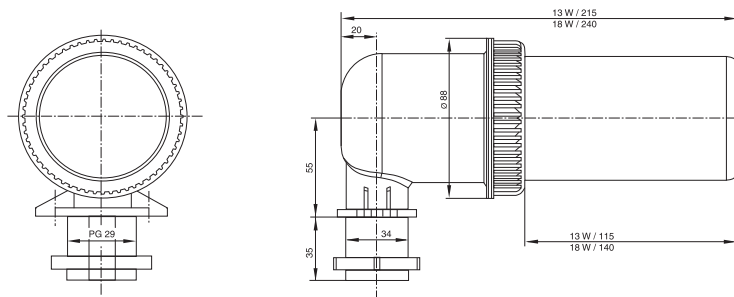
TYPE	PROTECTION TUBE	ITEM NO	POWER	LUMINOUS / LUMEN	LENGTH / MM	IP	BALLAST / VOLTAGE
Lumolux K2 E / 418	G	591-024-101	18 W	1200	215	67	EVG 24 V, DC built-in
Lumolux K2 E / 218	G	591-027-101	18 W	1200	240	67	EVG 230 V, 50-60 Hz built-in

FASTENING

fastening bore in machine body with hexagonal nut PG 29



DRAWING



SPARE PARTS



replacement lamp 18 W
TC-DEL
item no.: 213-920-014